

		WeldSkill WM 250 Amp	WeldSkill WM 400 Amp	WeldSkill WM 500 Amp
Applications		Light-Medium Duty Fabrication	Medium Duty Fabrication	Heavy Duty Fabrication
Standard Options	Rear Connector	■	■	■
	Knucklehead™ Flexible Conductor Tube	■	■	
Output Current		250 Amps	400 Amps	500 Amps
Duty Cycle - CO₂		60%	60%	60%
Wire Diameter		Up to .045" (1.2 mm)	Up to 1/16" (1.6 mm)	Up to 1/16" (1.6 mm)
Process	MIG	■	■	■
	Aluminum	■	■	■



WeldSkill® WM 250 Amp Air-Cooled MIG Gun



60% Duty Cycle - CO₂ Carbon Dioxide
Suitable for Light to Medium Duty Fabrication.

WELDING PROCESSES:
MIG (GMAW), Aluminum (GMAW)

Standard Options Include:

- Rear Connector and Knucklehead™ Flexible Conductor Tube
- Standard Conductor Tube – Part No. WM250J-60 (Stock No. 1620-1310) on all guns up to 15 ft (4.6 m)
- **Part No. 62J-45** (Stock No. 1620-1300) on guns over 15ft. (4.6m)
- Conduit Liner – WS42 Series

FEATURES

- **Oval Handle Shape** reduces operator fatigue
- **Dependable Welding** for a wide variety of industrial applications
- **High Impact-Resistant Handle and Components** for long-lasting durability
- **Three-Layer Conductor Tube Construction** (Copper Tube / Silicon-Resin Glass Insulator / Metal Jacket) for improved electrical conductivity
- **Improved Performance** with longer life consumables
- **Heavy Duty Design** with operator appeal

- **Wide Selection** of front end consumables available
- **Heavy Duty Contact Tips** in high heat applications offered
- **Improved Strain Relief** provides excellent flexibility

Tweco® Style Rear Connector

Adapter kits are available to fit Tweco rear connection to most wire feeders

Wire Size	Length	Part No.	Stock No.
Up To .045" (1.2 mm)	15 ft (4.6 m)	WM250-15-4045	1027-1007
	15 ft (4.6 m)	WM250-15-4045K4s	1027-1060

Miller® Style Rear Connector

Wire Size	Length	Part No.	Stock No.
Up To .045" (1.2 mm)	10 ft (3 m)	WM250M-10-4045	1027-1030
	12 ft (3.6 m)	WM250M-12-4045	1027-1031
	15 ft (4.6 m)	WM250M-15-4045	1027-1032
	15 ft (4.6 m)	WM250M-15-4045K4s	1027-1061
	25 ft (7.6 m)	WM250M-25-4045	1027-1023

Part No. MSAK354 (Stock No. 2642-2470) Control wire assembly furnished.

Lincoln® Style Rear Connector

Fits Lincoln LN7, 8, 9, SP200

Wire Size	Length	Part No.	Stock No.
Up To .045" (1.2 mm)	15 ft (4.6 m)	WM250L-15-4045	1027-1082

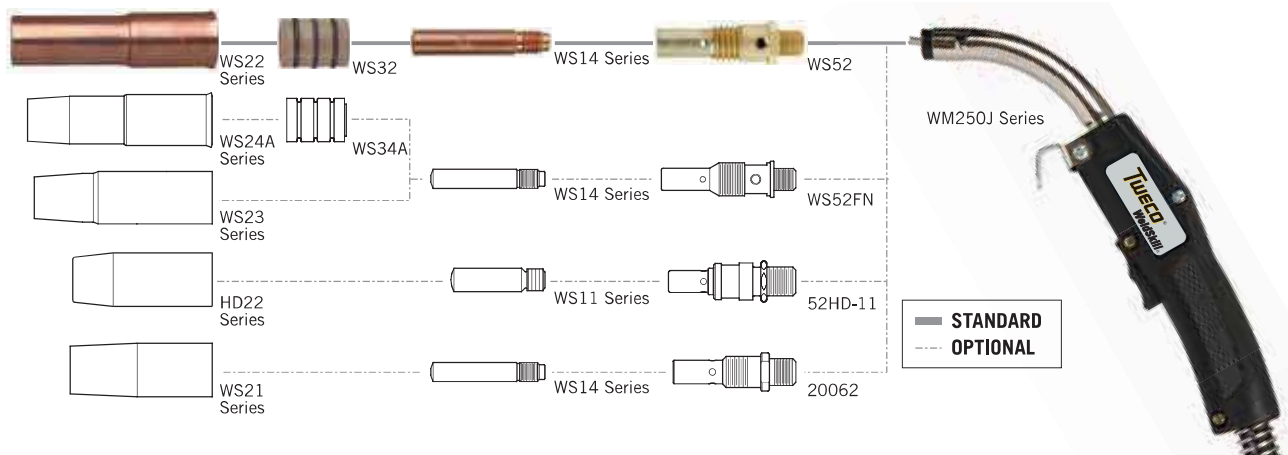
Some Lincoln wire feeders are assembled with their K1500-2 gun receiving bushing that will accept Tweco Style MIG Guns direct from the factory. Control wire Part No. MS354-DSLJ (Stock No. 2060-2137) must be ordered separately.

Part No. LAK354 (Stock No. 2642-2450) Control wire assembly furnished.

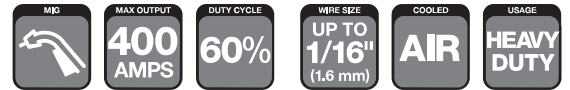
Euro-Kwik Style Rear Connector

Wire Size	Length	Part No.	Stock No.
Up To .045" (1.2 mm)	15 ft (4.6 m)	WM250X-15-4045	1027-1057

§ Suffix "K4" = Knucklehead Conductor Tube – Part No. 62SFLX480 (Stock No. 1620-1106)



Rated Output			Wire Size	Cooled	Application Usage
Amps	Duty Cycle	Gas			
250 Amps	60%	CO ₂ Carbon Dioxide	Up To .045" (1.2 mm)	Air	Light/Medium Duty Fabrication



WeldSkill® WM 400 Amp Air-Cooled MIG Gun



60% Duty Cycle - CO₂ Carbon Dioxide
Suitable for Medium Duty Fabrication.

WELDING PROCESSES:
MIG (GMAW), Aluminum (GMAW)

Standard Options Include:

- Rear Connector and Knucklehead™ Flexible Conductor Tube
- Standard Conductor Tube – Part No. WM400J-60 (Stock No. 1640-1305) on all guns up to 15 ft (4.6 m)
- **Part No. 62J-45** (Stock No. 1620-1300) on guns over 15ft. (4.6m)
- Conduit Liner – WS44 Series

FEATURES

- **Oval Handle Shape** reduces operator fatigue
- **Dependable Welding** for a wide variety of industrial applications
- **High Impact-Resistant Handle and Components** for long-lasting durability
- **Three-Layer Conductor Tube Construction** (copper tube/silicon-resin glass insulator/metal jacket) for improved electrical conductivity
- **Improved Performance** with longer life consumables
- **Heavy Duty Design** with operator appeal

- **Wide Selection** of front end consumables available
- **Heavy Duty Contact Tips** in high heat applications offered
- **Improved Strain Relief** provides excellent flexibility

Tweco® Style Rear Connector

Adapter kits are available to fit Tweco rear connection to most wire feeders

Wire Size	Length	Part No.	Stock No.
Up To .045" (1.2 mm)	12 ft (3.6 m)	WM400-12-3545	1047-1001
	15 ft (4.6 m)	WM400-15-3545	1047-1002
Up To 1/16" (1.6 mm)	15 ft (4.6 m)	WM400-15-116	1047-1007
	15 ft (4.6 m)	WM400-15-116K4§	1040-1170
	25 ft (7.6 m)	WM400-25-116	1047-1016

Lincoln® Style Rear Connector

Fits Lincoln LN7, 8, 9, SP200

Wire Size	Length	Part No.	Stock No.
Up To .045" (1.2 mm)	15 ft (4.6 m)	WM400L-15-3545	1047-1077
	15 ft (4.6 m)	WM400L-15-116	1047-1082
Up To 1/16" (1.6 mm)	15 ft (4.6 m)	WM400L-15-116K4§	1040-1172
	25 ft (7.6 m)	WM400L-25-116	1047-1022

Some Lincoln wire feeders are assembled with their K1500-2 gun receiving bushing that will accept Tweco Style MIG Guns direct from the factory. Control wire Part No. MS354-DSLJ (Stock No. 2060-2137) must be ordered separately.

Part No. LAK354 (Stock No. 2642-2450) Control wire assembly furnished.

Miller® Style Rear Connector

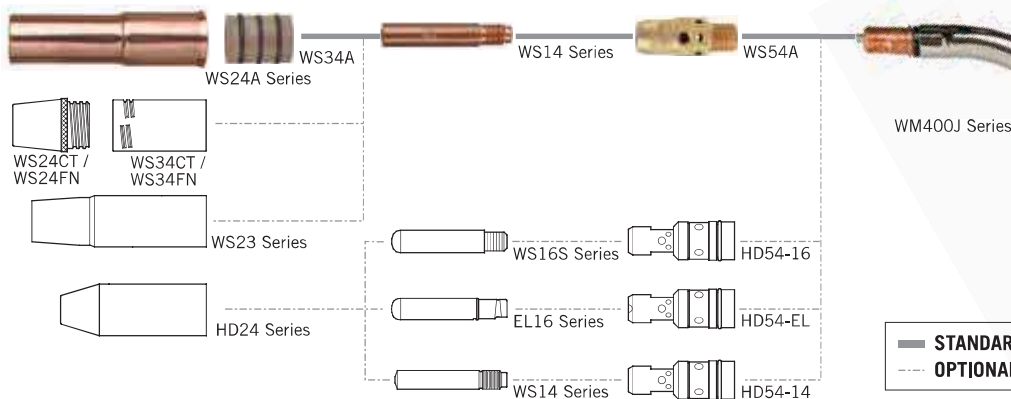
Wire Size	Length	Part No.	Stock No.
Up To .045" (1.2 mm)	15 ft (4.6 m)	WM400M-15-3545	1047-1027
	12 ft (3.6 m)	WM400M-12-116	1047-1031
Up To 1/16" (1.6 mm)	15 ft (4.6 m)	WM400M-15-116	1047-1032
	15 ft (4.6 m)	WM400M-15-116K4§	1040-1171
	25 ft (7.6 m)	WM400M-25-116	1047-1019

Part No. MSAK354 (Stock No. 2642-2470) Control wire assembly furnished.

Euro-Kwik Style Rear Connector

Wire Size	Length	Part No.	Stock No.
Up To .045" (1.2 mm)	15 ft (4.6 m)	WM400X-15-3545	1047-1052
	15 ft (4.6 m)	WM400X-15-116	1047-1057

§ Suffix "K4" = Kucklehead Conductor Tube – Part No. 64SFLX480 (Stock No. 1640-1113)



WM400J Series

— STANDARD
--- OPTIONAL

Rated Output			Wire Size	Cooled	Application Usage
Amps	Duty Cycle	Gas			
400 Amps	60%	CO ₂ Carbon Dioxide	Up To 1/16" (1.6 mm)	Air	Medium Duty Fabrication



Miller is a registered trademark of Illinois Tool Works, Inc. Lincoln is a registered trademark of Lincoln Electric Co. The aforementioned registered trademarks are in no way affiliated with Tweco. Tweco is registered trademark of ESAB.

WeldSkill® WM 500 Amp Air-Cooled MIG Gun



60% Duty Cycle - CO₂ Carbon Dioxide
Suitable for Light to Medium Duty Fabrication.

WELDING PROCESSES:
MIG (GMAW), Aluminum (GMAW)

Standard Options Include:

- Rear Connector
- Standard Conductor Tube – Part No. WM500J-60 (Stock No. 1650-1120) on all guns up to 15 ft (4.6 m)
- Conduit Liner – WS45 Series

FEATURES

- **Oval Handle Shape** reduces operator fatigue
- **Dependable Welding** for a wide variety of industrial applications
- **High Impact-Resistant Handle and Components** for long-lasting durability
- **Three-Layer Conductor Tube Construction** (copper tube/silicon-resin glass insulator/metal jacket) for improved electrical conductivity
- **Improved Performance** with longer life consumables
- **Heavy Duty Design** with operator appeal
- **Wide Selection** of front end consumables available
- **Heavy Duty Contact Tips** in high heat applications offered
- **Improved Strain Relief** provides excellent flexibility

Tweco® Style Rear Connector

Adapter kits are available to fit Tweco rear connection to most wire feeders

Wire Size	Length	Part No.	Stock No.
Up To 1/16" (1.6 mm)	15 ft (4.6 m)	WM500-15-116	1057-1007

Miller® Style Rear Connector

Wire Size	Length	Part No.	Stock No.
Up To 1/16" (1.6 mm)	15 ft (4.6 m)	WM500M-15-116	1057-1032

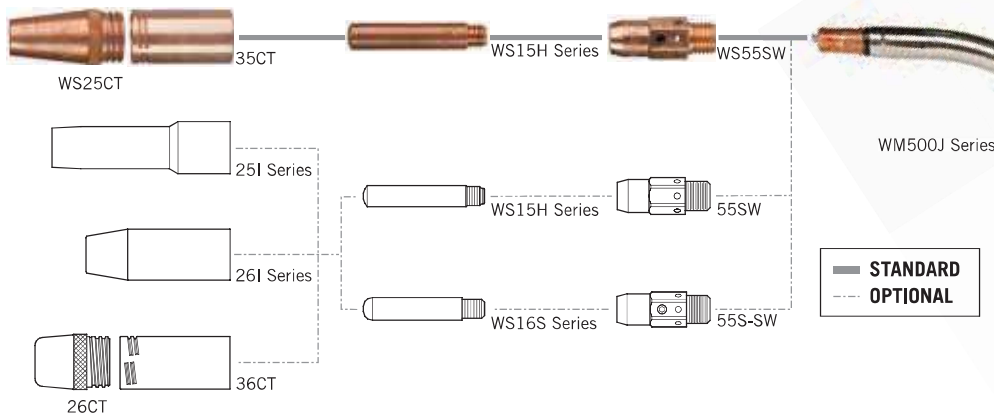
Lincoln® Style Rear Connector

Fits Lincoln LN7, 8, 9, SP200

Wire Size	Length	Part No.	Stock No.
Up To 1/16" (1.6 mm)	15 ft (4.6 m)	WM500L-15-116	1057-1082
Up To 3/32" (2.4 mm)	15 ft (4.6 m)	WM500L-15-332	1057-1092

Some Lincoln wire feeders are assembled with their K1500-2 gun receiving bushing that will accept Tweco Style MIG Guns direct from the factory. Control wire Part No. MS354-DSLJ (Stock No. 2060-2137) must be ordered separately.

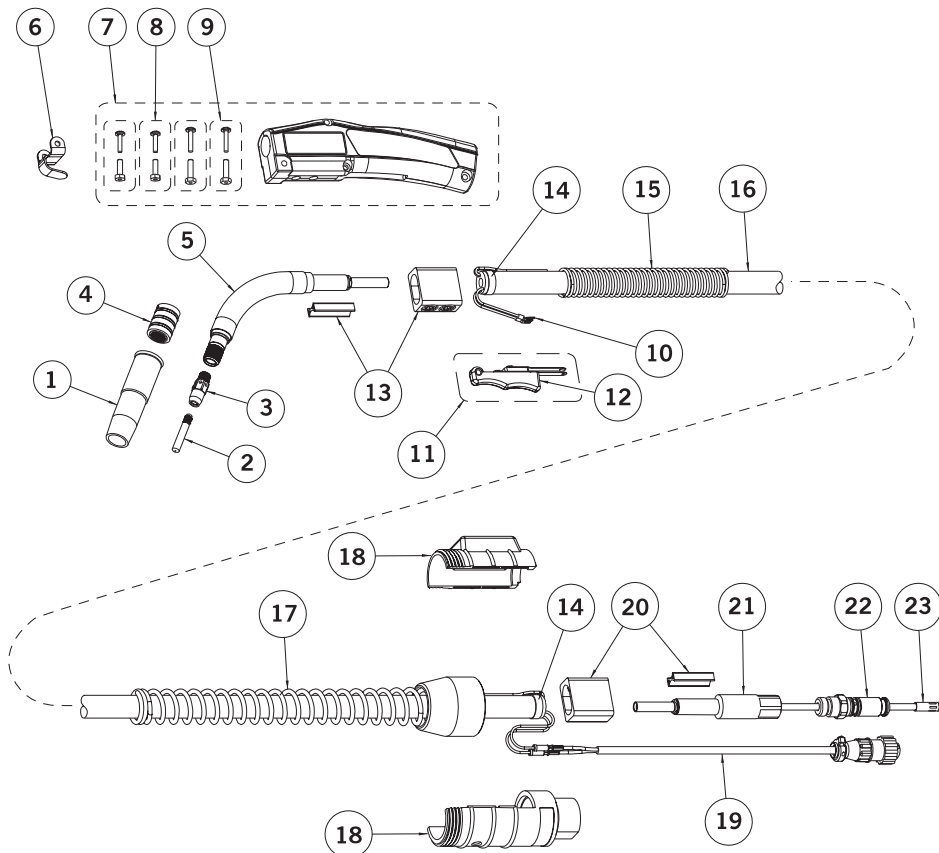
Part No. LAK354 (Stock No. 2642-2450) Control wire assembly furnished.



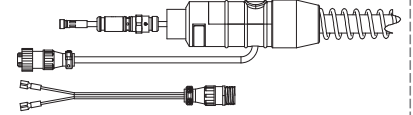
Rated Output			Wire Size	Cooled	Application Usage
Amps	Duty Cycle	Gas			
500 Amps	60%	CO ₂ Carbon Dioxide	Up To 1/16" (1.6 mm)	Air	Heavy Duty Fabrication



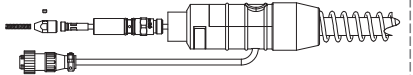
WeldSkill® WM MIG Gun Replacement Parts



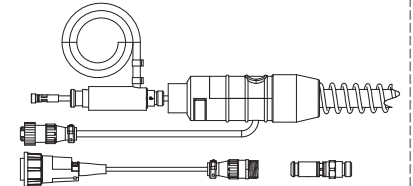
Tweco® Style Rear Connector



Miller® Style Rear Connector



Lincoln® Style Rear Connector



Euro-Kwik Style Rear Connector



#	Description	WeldSkill 250 Amp		WeldSkill 400 Amp		WeldSkill 500 Amp	
		Part No.	Stock No.	Part No.	Stock No.	Part No.	Stock No.
1	Nozzles	WS22 Series		WS24A Series		WS25CT Series	
2	Contact Tips	WS14 Series		WS14 Series		WS15H Series	
3	Gas Diffusers	WS52		WS54A		WS55SW	
4	Nozzle Insulators	WS32		WS34A		35CT	
5	Conductor Tubes	WM250J Series		WM400J Series		WM500J Series	
6	Gun Hanger	152	2020-2152	152	2020-2152	WM155	2050-2095
7	Handle Assembly	WM1-80	2042-2029	WM4-80	2042-2031	WM5-80	2042-2032
8	Binder Post & Screw - (2 ea. Required)	122FMS	2020-2123	122FMS	2020-2123	--	--
	Binder Post & Screw - (1 ea. Required)	--	--	--	--	122FMS	2020-2123
	Binder Post & Screw - (1 ea. Required)	--	--	--	--	124FMS	2040-2125
9	Binder Post & Screw - (2 ea. Required)	122FM	2020-2122	122FM	2020-2122	124FM	2040-2124
10	Trigger Control Wire Terminal (2 ea.)	244DS	2040-2245	244	2040-2244	244	2040-2244
11	Trigger Assembly	WM91	2010-2095	WM92	2020-2096	WM92	2020-2096
12	Trigger Blades	91C	2010-2093	92C	2020-2094	92C	2020-2094
13	Front Cable Connector	WM102	2020-2107	104	2040-2104	104	2040-2104
14	Cable Clamp	136	2060-2690	136	2060-2690	136	2060-2690
15	Front Strain Relief Spring	WM2SSR	2020-2134	WM4SSR	2040-2141	WM5SSR	2050-2096
16	Cablehoz®	200	1720-2100	400	1740-2100	500	1750-2100
17	Rear Strain Relief Spring	235RSSR	2060-2035	235RSSR	2060-2035	235RSSR	2060-2035
18	Rear Case (Direct Plug)	R6RC	2060-2040	R6RC	2060-2040	R6RC	2060-2040
	Rear Case (Euro Style)	X6RC	2060-2006	X6RC	2060-2006	X6RC	2060-2006
19	Control Wire (Standard)	MS354-DSM	2060-2140	MS354-DSM	2060-2140	MS354-DSM	2060-2140
	Control Wire (Dual Schedule)	194DS	2040-2195	194DS	2040-2195	194DS	2040-2195
20	Rear Cable Connector (Direct Plug)	104	2040-2104	--	--	--	--
	Rear Cable Connector (Euro Style)	172X-M	2020-2181	174X-M	2040-2181	176X-M	2060-2181
21	Adapter (Direct Plug)	M170-2H	2020-2165	M170-4H	2020-2166	M170-5H	2020-2167
22	Connector Plug	Refer to Pages 92-93		Refer to Pages 92-93		Refer to Pages 92-93	
23	Conduit Liners	Refer to Page 154		Refer to Page 154		Refer to Page 154	

Contact Tips - Standard Threaded Style

WS11, WS11H & WS11T Series

0.25" (6.35 mm) Outside Diameter - M6 x 1.0 Threads - 1.00" (25.4 mm) Overall Length

25 per pack



Wire Size (in / mm)	Tip I.D. (in / mm)	Standard		Heavy Duty		Tapered	
		Part No.	Stock No.	Part No.	Stock No.	Part No.	Stock No.
.023" (0.6 mm)	.031" (0.79 mm)	WS11-23	1110-1140	--	--	WS11T-23	1110-1340
.030" (0.8 mm)	.038" (0.97 mm)	WS11-30	1110-1141	--	--	WS11T-30	1110-1341
.035" (0.9 mm)	.044" (1.12 mm)	WS11-35	1110-1142	--	--	WS11T-35	1110-1342
.045" (1.2 mm)	.054" (1.37 mm)	WS11-45	1110-1144	WS11H45	1110-1244	WS11T-45	1110-1344

WS14, WS14H, & WS14T Series

0.25" (6.35 mm) Outside Diameter - .250-28 UNF Threads - 1.50" (38.1 mm) Overall Length

25 per pack



Wire Size (in / mm)	Tip I.D. (in / mm)	Standard		Heavy Duty		Tapered	
		Part No.	Stock No.	Part No.	Stock No.	Part No.	Stock No.
.030" (0.8 mm)	.038" (0.97 mm)	WS14-30	1140-1166	--	--	WS14T-30	1140-1341
.035" (0.9 mm)	.044" (1.12 mm)	WS14-35	1140-1167	WS14H-35	1140-1242	WS14T-35	1140-1342
.040" (1.0 mm)	.048" (1.22 mm)	WS14-40	1140-1168	WS14H-40	1140-1243	--	--
.045" (1.2 mm)	.054" (1.37 mm)	WS14-45	1140-1169	WS14H-45	1140-1244	WS14T-45	1140-1344
.052" (1.3 mm)	.064" (1.65 mm)	WS14-52	1140-1170	WS14H-52	1140-1245	WS14T-52	1140-1345
1/16" (1.6 mm)	.073" (1.85 mm)	WS14-116	1140-1171	WS14H-116	1140-1246	WS14T-116	1140-1346
5/64" (2.0 mm)	.090" (2.29 mm)	WS14-564	1140-1174	WS14H-564	1140-1247	--	--
3/64" AL (1.2 mm)	.059" (1.50 mm)	WS14A364	1140-1172	WS14AH-364	1140-1248	--	--

WS15H & WS15HFC Series

0.345" (8.8 mm) Outside Diameter - .3125-24 UNF Threads - 1.970" (50 mm) Overall Length / HFC 1.590" (40.4 mm) Overall Length

25 per pack



Wire Size (in / mm)	Tip I.D. (in / mm)	Standard		Heavy Duty		Tapered	
		Part No.	Stock No.	Part No.	Stock No.	Part No.	Stock No.
.035" (0.9 mm)	.044" (1.12 mm)	WS15H-35	1150-1230	--	--	--	--
.045" (1.2 mm)	.054" (1.37 mm)	WS15H-45	1150-1232	--	--	--	--
1/16" (1.6 mm)	.073" (1.85 mm)	WS15H-116	1150-1234	WS15HFC-116	1150-1268	--	--
5/64" (2.0 mm)	.090" (2.29 mm)	WS15H-564	1150-1235	--	--	--	--
3/32" (2.4 mm)	.106" (2.67 mm)	WS15H-332	1150-1238	--	--	--	--
7/64" (2.8 mm)	.120" (3.05 mm)	WS15H-764	1150-1237	--	--	--	--

16S & 16ST Series

0.375" (9.5 mm) Outside Diameter - M8 x 1.25 Threads - 1.50" (38.1 mm) Overall Length

25 per pack



Wire Size (in / mm)	Tip I.D. (in / mm)	Standard		Heavy Duty		Tapered	
		Part No.	Stock No.	Part No.	Stock No.	Part No.	Stock No.
.035" (0.9 mm)	.044" (1.12 mm)	WS16S-35	1160-1425	--	--	WS16ST-35	1160-1440
.045" (1.2 mm)	.054" (1.37 mm)	WS16S-45	1160-1426	--	--	WS16ST-45	1160-1441
.052" (1.3 mm)	.064" (1.65 mm)	WS16S-52	1160-1427	--	--	--	--
1/16" (1.6 mm)	.073" (1.85 mm)	WS16S-116	1160-1428	--	--	WS16ST-35	1160-1443
5/64" (2.0 mm)	.090" (2.29 mm)	WS16S-564	1160-1429	--	--	--	--

Nozzles & Nozzle Insulators - Air-Cooled

WS21 Series

3-Piece Nozzle Design - 0.750" (19.05 mm) Outside Diameter
 Standard Alloy Copper. Self Insulated Nozzles.
 2 per pack



WS21 Series

Nozzle Style	Bore Diameter	Part No.	Stock No.	Nozzle Design	Nozzle/Contact Tip Relationship
Thread-On	3/8" (9.5 mm)	WS21-37	1210-1340	Standard	1/8" - 5/32" (3.2 mm - 3.97 mm) Tip Recess
	3/8" (9.5 mm)	WS21T-37	1210-1343	Tapered	1/8" - 5/32" (3.2 mm - 3.97 mm) Tip Recess
	1/2" (12.7 mm)	WS21-50F	1210-1346	Standard	Flush To 1/16" (1.6 mm) Tip Recess
	1/2" (12.7 mm)	WS21-50	1210-1341	Standard	1/8" - 5/32" (3.2 mm - 3.97 mm) Tip Recess
	5/8" (15.9 mm)	WS21-62	1210-1342	Standard	1/8" - 5/32" (3.2 mm - 3.97 mm) Tip Recess

WS22 Series

Formed Nozzle - 0.750" (19.05 mm) Outside Diameter
 Standard Alloy Copper. Use with Nozzle Insulator Part No. WS32
 (Stock No. 1320-1100).
 2 per pack



WS22 Series


 WS32 Insulator
(sold separately)

Nozzle Style	Bore Diameter	Part No.	Stock No.	Nozzle Design	Nozzle/Contact Tip Relationship
Thread-On	3/8" (9.5 mm)	WS22-37SS	1220-1345	Standard Short Stop	Flush to 1/8" (3.2 mm) Tip Recess
	3/8" (9.5 mm)	WS22T-37SS	1220-1336	Standard Short Stop	Flush to 1/8" (3.2 mm) Tip Recess
	1/2" (12.7 mm)	WS22-50	1220-1341	Standard	Adjustable Recess To Protruding
	1/2" (12.7 mm)	WS22-50SS	1220-1346	Standard Short Stop	Flush to 1/8" (3.2 mm) Tip Recess
	5/8" (15.9 mm)	WS22-62	1220-1342	Standard	Adjustable Recess To Protruding
	5/8" (15.9 mm)	WS22-62SS	1220-1347	Standard Short Stop	Flush to 1/8" (3.2 mm) Tip Recess

WSHD22 Series

3-Piece Nozzle Design - 0.875" (22.2 mm) Outside Diameter
 Standard Alloy Copper. Use with HD52 Series Gas Diffusers. Self-Insulated Nozzle.
 2 per pack



WSHD22 Series

Nozzle Style	Bore Diameter	Part No.	Stock No.	Nozzle Design	Nozzle/Contact Tip Relationship
Slip-On	1/2" (12.7 mm)	WSHD22-50	1220-1330	Standard	1/8" - 5/32" (3.2 mm - 3.97 mm) Tip Recess

WS23 Series

3-Piece Nozzle Design - 0.875" (22.2 mm) Outside Diameter
 Standard Alloy Copper. Self-Insulated Nozzles.
 2 per pack



WS23 Series

Nozzle Style	Bore Diameter	Part No.	Stock No.	Nozzle Design	Nozzle/Contact Tip Relationship
Thread-On	3/8" (9.5 mm)	WS23-37	1230-1010	Standard	1/8" - 5/32" (3.2 mm - 3.97 mm) Tip Recess
	1/2" (12.7 mm)	WS23-50	1230-1011	Standard	1/8" - 5/32" (3.2 mm - 3.97 mm) Tip Recess
	1/2" (12.7 mm)	WS23-50F	1230-1016	Standard	Flush To 1/16" (1.6 mm) Tip Recess
	5/8" (15.9 mm)	WS23-62	1230-1012	Standard	1/8" - 5/32" (3.2 mm - 3.97 mm) Tip Recess
	5/8" (15.9 mm)	WS23H-62	1230-1221	Heavy Duty	1/8" - 5/32" (3.2 mm - 3.97 mm) Tip Recess
	5/8" (15.9 mm)	WS23-75	1230-1013	Standard	1/8" - 5/32" (3.2 mm - 3.97 mm) Tip Recess

WS23T Series

3-Piece Nozzle Design - 0.875" (22.2 mm) Outside Diameter
 Standard Alloy Copper. Self-Insulated Nozzles.
 2 per pack



WS23T Series

Nozzle Style	Bore Diameter	Part No.	Stock No.	Nozzle Design	Nozzle/Contact Tip Relationship
Thread-On	3/8" (9.5 mm)	WS23T-37	1230-1035	Tapered	1/8" - 5/32" (3.2 mm - 3.97 mm) Tip Recess
	3/8" (9.5 mm)	WS23T-37F	1230-1303	Tapered	Flush To 1/16" (1.6 mm) Tip Recess

Nozzles & Nozzle Insulators - Air-Cooled

WS24A Series

Formed Nozzle - 0.750" (19.05 mm) Outside Diameter
 Use with Nozzle Insulator Part No. WS34A (Stock No. 1340-1125).
 2 per pack



WS24A Series


 WS34A Insulator
(sold separately)

Nozzle Style	Bore Diameter	Part No.	Stock No.	Nozzle Design	Nozzle/Contact Tip Relationship
Slip-On	3/8" (9.5 mm)	WS24A-37SS	1240-1559	Standard Short Stop	Flush to 1/8" (3.2 mm) Tip Recess
	1/2" (12.7 mm)	WS24A-50	1240-1555	Standard	Adjustable Tip Recess - Tip Protruding
	1/2" (12.7 mm)	WS24A-50SS	1240-1560	Standard Short Stop	Flush to 1/8" (3.2 mm) Tip Recess
	5/8" (15.9 mm)	WS24A-62	1240-1556	Standard	Adjustable Tip Recess - Tip Protruding
	5/8" (15.9 mm)	WS24A-62SS	1240-1561	Standard Short Stop	Flush to 1/8" (3.2 mm) Tip Recess
	5/8" (15.9 mm)	WS24AH-62SS	1240-1566	Standard Short Stop	Flush to 1/8" (3.2 mm) Tip Recess
	3/4" (19.5 mm)	WS24A-75	1240-1557	Standard	Adjustable Tip Recess - Tip Protruding

WS24CT Series

Coarse Thread Nozzle
 Use with Nozzle Insulator Part No. WS34CT (Stock No. 1340-1126).
 2 per pack



WS24CT Series


 WS34CT Insulator
(sold separately)

Nozzle Style	Bore Diameter	Part No.	Stock No.	Nozzle Design	Nozzle/Contact Tip Relationship
Thread-On	1/2" (12.7 mm)	WS24CT-50S	1240-1580	Standard Short Stop	5/32" (3.97 mm) Tip Recess
	5/8" (15.9 mm)	WS24CT-62S	1240-1581	Standard Short Stop	5/32" (3.97 mm) Tip Recess
	5/8" (15.9 mm)	WS24CT-62R	1240-1591	Tapered	1/2" (12.7 mm) Tip Recess
	3/4" (19.5 mm)	WS24CT-75S	1240-1582	Standard Short Stop	5/32" (3.97 mm) Tip Recess

WS24FN Series

Fine Thread Nozzle
 Use with Nozzle Insulator Part No. WS34FN (Stock No. 1340-1127).
 2 per pack



WS24FN Series


 WS34FN Insulator
(sold separately)

Nozzle Style	Bore Diameter	Part No.	Stock No.	Nozzle Design	Nozzle/Contact Tip Relationship
Thread-On	1/2" (12.7 mm)	WS24FN-50S	1240-1715	Standard Short Stop	5/32" (3.97 mm) Tip Recess
	5/8" (15.9 mm)	WS24FN-62S	1240-1727	Standard Short Stop	5/32" (3.97 mm) Tip Recess

WSHD24 Series

3-Piece Nozzle Design - 1.125" (28.6 mm) Outside Diameter
 Use with HD54 Series Gas Diffusers.
 2 per pack



WSHD24 Series

Nozzle Style	Bore Diameter	Part No.	Stock No.	Nozzle Design	Nozzle/Contact Tip Relationship
Slip-On (A)	5/8" (15.9 mm)	WSHD24L-62	1240-1572	Tapered	1/8" - 5/32" (3.2 mm - 3.97 mm) Tip Recess
	5/8" (15.9 mm)	WSHD24L-62F	1240-1573	Tapered	Flush To 1/16" (1.6 mm) Tip Recess
	5/8" (15.9 mm)	WSHD24-62	1240-1570	Standard (1)	1/8" - 5/32" (3.2 mm - 3.97 mm) Tip Recess
	3/4" (19.5 mm)	WSHD24L-75	1240-1574	Tapered	1/8" - 5/32" (3.2 mm - 3.97 mm) Tip Recess
	3/4" (19.5 mm)	WSHD24-75	1240-1571	Standard	1/8" - 5/32" (3.2 mm - 3.97 mm) Tip Recess

Nozzles & Nozzle Insulators - Air-Cooled

25CT Series

Coarse Thread Nozzle

Use with Nozzle Insulator Part No. WS35CT (Stock No. 1350-1425).

2 per pack



Nozzle Style	Bore Diameter	Part No.	Stock No.	Nozzle Design	Nozzle/Contact Tip Relationship
Thread-On	1/2" (12.7 mm)	WS25CT-50	1250-1439	Standard	1/8" (3.2 mm) Tip Recess
	5/8" (15.9 mm)	WS25CT-62	1250-1440	Standard	1/8" (3.2 mm) Tip Recess
	3/4" (19.5 mm)	WS25CT-75	1250-1441	Standard	1/8" (3.2 mm) Tip Recess

Gas Diffusers - Standard Air-Cooled

MINI-MIG Series

5 per pack



Part No.	Stock No.	Material	Contact Tip	Nozzle
WS35-50	1500-1140	Brass	WS11 Series	WS21 Series

WM150 Series

5 per pack



Part No.	Stock No.	Material	Contact Tip	Nozzle
WS51	1510-1140	Brass	WS11 Series	WS21 Series

WM250 Series

5 per pack



Part No.	Stock No.	Material	Contact Tip	Nozzle
WS52	1520-1140	Brass	WS14 Series	WS22 Series
WS52FN	1520-1141	Brass	WS14 Series	WS24A , WS23 Series

WM400 Series

5 per pack



Part No.	Stock No.	Material	Contact Tip	Nozzle
WS54A	1540-1145	Brass	WS14 Series	WS24A, WS24CT, & WS23 Series

WM500 Series

5 per pack



Part No.	Stock No.	Material	Contact Tip	Nozzle
WS55SW*	1550-1140	Copper	WS15H Series	WS25CT Series
WS55H**	1550-1141	Copper	WS15H Series	WS25CT Series

*Use with WS45-3545, WS45-116, and WS45N-3545 Series Conduit Liners

**Use with WS45H-332, 45H-764, and 45-18 Series Conduit Liners

WeldSkill® Conductor Tubes - Air-Cooled

WeldSkill Standard 150

Description	Part No.	Stock No.	Outer Jacket Material	Back End Threads	Front End Threads
60 Degree with 2-1/4" (57 mm) Radius	WM150J-60	1610-1116	Metal	I.D. 3/8"-24 UNF-2B	I.D. M10 x 1.5-6H
45 Degree with 2-1/4" (57 mm) Radius	WM150J-45	1610-1115	Metal	I.D. 3/8"-24 UNF-2B	I.D. M10 x 1.5-6H
60 Degree with 2" (50.5 mm) Radius	WM150-60	1610-1112	Neoprene Rubber	I.D. 3/8"-24 UNF-2B	I.D. M10 x 1.5-6H
80 Degree with 2" (50.5 mm) Radius	WM150-80	1610-1113	Neoprene Rubber	I.D. 3/8"-24 UNF-2B	I.D. M10 x 1.5-6H
180 Degree, Straight	WM150-180	1610-1114	Neoprene Rubber	I.D. 3/8"-24 UNF-2B	I.D. M10 x 1.5-6H

WeldSkill Standard 250

Description	Part No.	Stock No.	Outer Jacket Material	Back End Threads	Front End Threads
60 Degree with 3" (76.2 mm) Radius	WM250J-60	1620-1310	Metal	I.D. 3/8"-24 UNF-2B	3/8"-24 NF-2B

WeldSkill Standard 400

Description	Part No.	Stock No.	Outer Jacket Material	Back End Threads	Front End Threads
60 Degree with 3" (76.2 mm) Radius	WM400J-60	1640-1305	Metal	I.D. 3/8"-24 UNF-2B	I.D. 3/8"-24 UNF-2B O.D. 9/16"-18UNF-2A
45 Degree with 3" (76.2 mm) Radius	WM400J-45	1640-1306	Metal	I.D. 3/8"-24 UNF-2B	I.D. 3/8"-24 UNF-2B O.D. 9/16"-18UNF-2A

WeldSkill Standard 500

Description	Part No.	Stock No.	Outer Jacket Material	Back End Threads	Front End Threads
60 Degree with 5" (127 mm) Radius	WM500J-60	1650-1120	Metal	I.D. 7/16"-20UNF-2B	I.D. 7/16"-20 UNF-2B O.D. 5/8"-18 UNF-2A

Conduit Liners - For Use With Steel Welding Wires

WM150 & WM250 Series - Steel Wound

Wire Size	Length	Part No.	Stock No.
.030" - .035" (0.8 - 0.9 mm)	15 ft (5 m)	WS42-3035-15	1420-1140
.030" - .035" (0.8 - 0.9 mm)	25 ft (8 m)	WS42-3035-25	1420-1145
.040" - .045" (1.0 - 1.2 mm)	15 ft (5 m)	WS42-4045-15	1420-1141
.040" - .045" (1.0 - 1.2 mm)	25 ft (8 m)	WS42-4045-25	1420-1146

WM500 Series - Steel Wound

Wire Size	Length	Part No.	Stock No.
.035" - .045" (0.9 - 1.2 mm)	15 ft (5 m)	WS45-3545-15	1450-1104
.052" - 1/16" (1.3 - 1.6 mm)	15 ft (5 m)	WS45-116-15	1450-1114
3/32" (2.4 mm)	15 ft (5 m)	WS45H-332-15	1450-1134

WM400 Series - Steel Wound

Wire Size	Length	Part No.	Stock No.
.035" - .045" (0.9 - 1.2 mm)	15 ft (5 m)	WS44-3545-15	1440-1140
.035" - .045" (0.9 - 1.2 mm)	25 ft (8 m)	WS44-3545-25	1440-1145
.052" - 1/16" (1.3 - 1.6 mm)	15 ft (5 m)	WS44-116-15	1440-1141
.052" - 1/16" (1.3 - 1.6 mm)	25 ft (8 m)	WS44-116-25	1440-1146
5/64" (2.0 mm)	15 ft (5 m)	WS44-564-15	1440-1142
5/64" (2.0 mm)	25 ft (8 m)	WS44-564-25	1440-1147



Conduit Liners - For Use With Aluminum Welding Wires

WM150 & WM250 Series - Teflon

Wire Size	Length	Part No.	Stock No.
.030" - .035" (0.8 - 0.9 mm)	15 ft (5 m)	WS42N-3545-15	1420-1142

WM400 Series - Nylon

Wire Size	Length	Part No.	Stock No.
.030" - 3/64" (0.8 - 1.2 mm)	15 ft (5 m)	WS44N-3545-15	1440-1135
1/16" (1.6 mm)	15 ft (5 m)	WS44N-116-15	1440-1136